

2024
10th
Annual

Updates in
Kidney Transplantation
Optimizing Patient Readiness
for Transplant Success

June 27, 2024

7:30am – 4:00pm



A live, hybrid conference

- In-person at UVA Fontaine Research Park, 560 Ray C. Hunt Dr., Charlottesville
- Virtually through Zoom

 **UVA Health**

Provided by the University of Virginia School of Medicine and School of Nursing

Kidney transplantation is the best option to restore quality of life for most patients with end stage renal disease (ESRD). Dialysis unit staff require relevant and accurate information regarding advances in kidney transplantation in order to educate patients in their dialysis units. Dialysis patients benefit from education that starts early in their diagnosis of ESRD. Through partnership with dialysis unit staff and nephrology practice staff, we are able to provide a consistent message throughout the care continuum about the lifesaving benefit of kidney transplantation, connections between patient experience and transplant outcomes, and strategies for overcoming barriers to successful transplantation.

Target Audience

dialysis unit nurses
social workers
technicians
dieticians

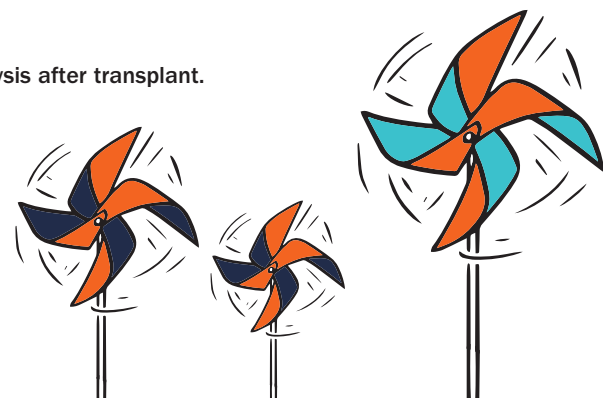
This program will address

- The similar characteristics of successful transplant candidates
- The connection between a patient's support network and transplant outcome
- The patient's role in selecting the type of deceased donor kidney they may be offered
- Obese patients as surgical candidates for kidney transplantation
- Selection committee candidate review process
- Coaching patients in the approach of a living donor
- Pre-emptive kidney transplant
- Delayed graft function
- Historical racial inequity for patients with ESRD
- Motivating and supporting potential kidney transplant candidates

Desired outcomes

Upon completion of this learning activity, participants should be able to:

- 1 Describe attributes of a good kidney transplant candidate.
- 2 Discuss key features of a perfect transplant recipient support network.
- 3 Explain different types of deceased donor kidneys that patients may choose to accept for transplant.
- 4 Summarize the impact of obesity as it relates to surgical options for patients considering kidney transplantation.
- 5 Discuss how best to support patient weight loss goals to achieve optimal BMI.
- 6 Describe the process for identifying potential living donors.
- 7 Discuss management of DGF and how best to support patients who return to dialysis after transplant.
- 8 Describe the history of racial inequity for patients awaiting kidney transplant.
- 9 Discuss methods to encourage patients to pursue kidney transplantation.





AGENDA

7:30 AM	Registration, Breakfast (provided), and Exhibitors
8:00 AM	Welcome Barb Shephard, RN, BSN, CCTC
8:15 AM	What Makes a Good Candidate for Kidney Transplant? Sarthak Virmani, MBBS
8:45 AM	Building the Perfect Support Network Alexander Larson, LCSW
9:15 AM	Selecting the Right Deceased Donor Kidney Jeanne Kamal, MD
9:45 AM	Break and Exhibitors
10:00 AM	Obesity from a Surgical Perspective Christina Papageorge, MD
10:30 AM	BMI Criteria: Supporting Weight Loss Goals Mallory Foster, RD, CNSC, CCTD
11:00 AM	Mock Selection Committee Multidisciplinary Team
11:45 AM	Lunch (provided) and Exhibitors
12:30 PM	Patient Panel: Identifying Living Donors Anita Sites, RN, MSN, AG-ACNP-BC, CCTC, Moderator
1:15 PM	Pre-emptive Kidney Transplant Angie Nishio-Lucar, MD
1:45 PM	Break and Exhibitors
2:00 PM	Delayed Graft Function Joseph Leeds, MD
2:30 PM	Racial Inequity and Kidney Transplant Seth McElroy, MSN, RN, CNL, CNOR
3:00 PM	Motivating Patients to Take the Next Step Ruth Berta, MSW and Jennifer Nelson, MSW
3:45 PM	Closing Remarks and Evaluate to Claim Credit Barb Shephard, RN, BSN, CCTC
4:00 PM	Adjourn

COURSE FACULTY & PLANNING COMMITTEE

(*denotes Planning Committee)
Unless otherwise noted, all faculty and planning committee members are from the University of Virginia.

- Ruth Berta, MSW**
Clinical Social Worker, UVA Augusta Dialysis
- Kenneth Brayman, MD, PhD, FACS**
Professor of Surgery, Medicine, Pediatrics and Biomedical Engineering; Director, Kidney, Pancreas and Islet Transplant Programs; Director, Pediatric Renal Transplantation; Director, Center for Cellular Therapy and Biologic Therapeutics; Nabi Professor of Transplantation Sciences*
- Alyssa Briske, RDN**
Transplant Dietician*
- Megan Foley, LCSW**
Manager, Social Work Services, East Virginia Region, Fresenius Kidney Care*
- Mallory Foster, RD, CNSC, CCTD***
Transplant Dietician*
- Suzanne Jenkins, MSN, RN**
Nurse Education Coordinator*
- Emma Johnstone, RN**
Transplant Coordinator, Abdominal Transplant*
- Jeanne Kamal, MD**
Transplant Nephrologist*
- Joo Kim, MSN, RN, CNL**
Kidney Transplant Coordinator*
- Alexander Larson, LCSW**
Clinical Social Worker, UVA Transplant Program*
- Joseph Leeds, MD**
Assistant Professor of Medicine, Division of Nephrology*
- Seth McElroy, MSN, RN, CNL, CNOR**
Renal Transplant Outreach Coordinator*
- Jennifer Nelson, MSW**
Clinical Social Worker, UVA Amherst Dialysis
- Angie Nishio-Lucar, MD**
Associate Professor of Medicine; Program Director, Transplant Nephrology Fellowship; Medical Director, Living Kidney Donor Program*
- Christina Papageorge, MD**
Assistant Professor of Surgery*
- Swati Rao, MD**
Transplant Nephrologist*
- Anthony Reed**
Biomedical Technician and Patient Ambassador*
- Barbara Shephard, RN, BSN, CCTC**
Transplant Outreach Manager and Physician Education Coordinator; Course Director*
- Anita Sites, RN, MSN, AG-ACNP-BC, CCTC**
Living Donor Transplant Coordinator*
- Rebecca Turner, RD, CNSC**
Transplant Dietician*
- Carol Vincel, MSN, RN**
Nurse Practitioner*
- Sarthak Virmani, MBBS**
Assistant Professor of Medicine, Division of Nephrology*
- Linda Hanson, MSM**
Program Manager

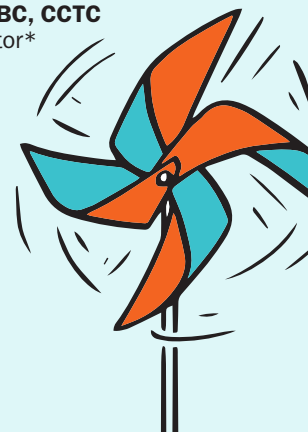
Registration

Scan the QR code below or navigate to www.cmevillage.com and select **Learning Portal** to view offerings. Registration will close at midnight on Sunday, June 23, 2024. The course syllabus will be available only online the week of the conference until 30 days after the conference.

PLEASE NOTE: Policies on cancellation, payment methods, and accommodation requests can be found on our website under FAQs. Additional questions, please contact uvacme@virginia.edu or 434-924-5310.

	Early Bird Rate through June 9, 2024	Rate June 10- June 23, 2024
Healthcare Provider	\$80.....	\$95
Resident/Fellow/Student.....	\$65.....	\$80

Please choose your registration category carefully. You will not be able to change from virtual to in-person registration (please note the refund policy on our website under FAQs).



Accreditation & Designation Statement



JOINTLY ACCREDITED PROVIDER™
INTERPROFESSIONAL CONTINUING EDUCATION

In support of improving patient care, the University of Virginia School of Medicine and School of Nursing is jointly accredited by the Accreditation Council for Continuing Medical Education (ACCME), the Accreditation Council for Pharmacy Education (ACPE), and the American Nurses Credentialing Center (ANCC), to provide continuing education for the healthcare team.

IPCE Credits

This activity was planned by and for the healthcare team, and learners will receive **6.5 Interprofessional Continuing Education (IPCE) credits** for learning and change.

ANCC Contact Hours

The University of Virginia School of Medicine and School of Nursing awards **6.5 contact hours** to a nurse who participates in this educational activity and completes the post activity evaluation.

ASWB Credit



As a Jointly Accredited Organization, The University of Virginia School of Medicine and School of Nursing is approved to offer social work continuing education by the Association of Social Work Boards (ASWB) Approved Continuing Education (ACE) program. Organizations, not individual courses, are approved under this program. Regulatory boards are the final authority on courses accepted for continuing education credit. Social workers completing this course receive **6.5** general continuing education credits.

CEPTC Credit

As a designated Approved Provider by the American Board for Transplant Certification (ABTC), University of Virginia Charles O. Strickler Transplant Center grants up to **6.5 Category 1 Continuing Education Points for Transplant Certification (CEPTCs)** for this offering.
CODE: 162-161

Commission on Dietetic Registration

the credentialing agency for the
right Academy of Nutrition and Dietetics

Commission on Dietetic Registration

Completion of this RD/DTR profession-specific or IPCE activity awards CPEUs (One IPCE credit=One CPEU).

If the activity is dietetics-related but not targeted to RDs or DTRs, CPEUs may be claimed which are commensurate with participation in contact hours (One 60 minute hour= 1 CPEU). RD's and DTRs are to select activity type 102 in their Activity Log. Performance Indicator selection is at the learner's discretion.

Hours of Participation

The University of Virginia School of Medicine and School of Nursing awards **6.5 hours of participation** (consistent with the designated number of *AMA PRA Category 1 Credit(s)™* or ANCC contact hours) to a participant who successfully completes this educational activity. The University of Virginia School of Medicine and School of Nursing maintains a record of participation for six (6) years.

designed by toni@westhillgraphics.com

CONTACT INFORMATION

Linda Hanson, MSM

Program Manager, School of Nursing Continuing Education

lh3x@virginia.edu | 434-982-4136

DIRECTIONS

560 Ray C. Hunt Drive is located in the University of Virginia's Fontaine Research Park, near the intersection of Route 29 and interstate 64.

Directions from Locations North of Charlottesville:

- Drive south on Route 29 towards Charlottesville.
- Take the US-29 Bypass South ramp toward US-250 W/I-64/Lynchburg/Staunton/Richmond to the right (just past Best Buy).
- Go approximately 3 miles to the Fontaine Avenue exit and then turn left.
- At the traffic light, turn right into the research park.
- Turn left at the top of the entrance and we are the building on your left.
- Park in front of the building in the visitor's section.

Directions from Interstate 64:

- Take exit 118-B towards Charlottesville.
- Take the Fontaine Avenue exit and turn right.
- At the traffic light, turn right into the research park.
- Turn left at the top of the entrance and we are the building on your left.
- Park in front of the building in the visitor's section.

